

# General Pressure Gauge

## Model. DS-1010 Series

# DAESHIN

### Summary

DS-1010 Series는 일반적으로 가장 많이 쓰이는 압력계로서 Bourdon Tube를 특수가공하여 내구성을 갖추어 정압이 걸리는 배관이나 부식성이 없는 Gas & Steam 라인등 각종 현장의 일반적인 설비의 압력측정에 용이한 계기입니다.

### Diameter

40, 50, 60, 75, 100, 150, and 200mm

### Accuracy

40mm :  $\pm 3.0$  of Full Scale

50mm :  $\pm 3.0$  or  $\pm 1.5$  of Full Scale

60,75,100,150,200mm :  $\pm 1.5$  of Full Scale

### Scale Range

40,50mm : 0.2 ~ 5 Mpa

60,75mm : -0.1 ~ 2 Mpa, -0.1 ~ 0 Mpa, 0 ~ 35 Mpa

100,150mm : -0.1 ~ 2 Mpa, -0.1 ~ 0 Mpa, 0 ~ 100 Mpa

200mm : -0.1 ~ 2 Mpa, -0.1 ~ 0 Mpa, 0 ~ 5 Mpa

### Working Pressure

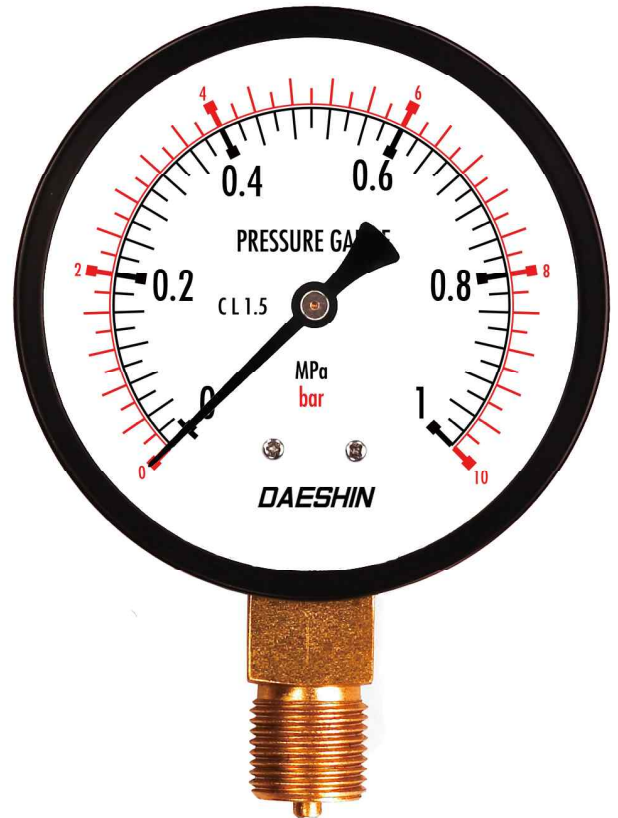
정압력 : 75% of Full Scale

변동압력 : 60% of Full Scale

### Working Temperature

기체 : -20 ~ 65°C

유체 : -20 ~ 40°C



Model. DS-1011

## Standard features

### Pressure connection

Brass (C3604BE)

### Element

Brass (C2700T)

C Type Bourdon Tube or Helical Tube

### Case

Steel (SPCD)

Black Coating

### Cover

Steel (SPCD)

Black Coating

### Window

General Glass

### Movement

Brass

### Dial

Aluminum

White Coating

### Pointer

Aluminum

Black Coating

### Type

DS-1011 (Rimless Type)

DS-1012 (Surface Type)

DS-1013 (Flush Mounting Type)

DS-1014 (Panel attachment Type)

### Process connection

40mm : 1/8" PT & NPT

50mm : 1/4" PT & NPT, PF

60mm : 1/4" PT & NPT, PF

75mm : 3/8" PT & NPT, PF

100mm : 3/8", 1/2" PT & NPT, PF

150mm : 1/2" PT & NPT, PF

200mm : 3/8" PF

### Option

Bracket

Throttles

Accessories

Pressure Gauge

Accessories

Thermometer

Thermocouple & R.T.D

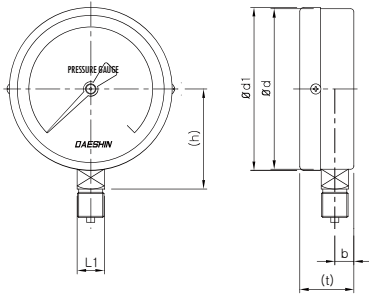
Thermowell

# General Pressure Gauge

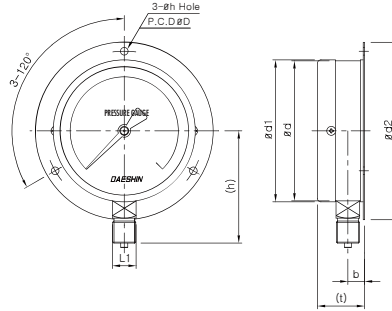
## Model. DS-1010 Series

# DAESHIN

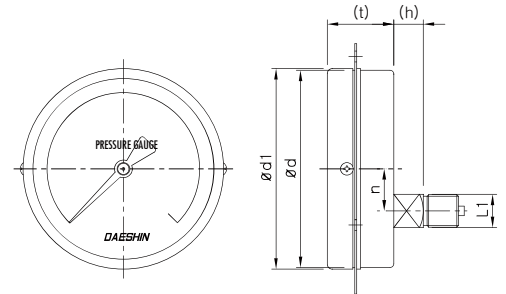
### 외형도



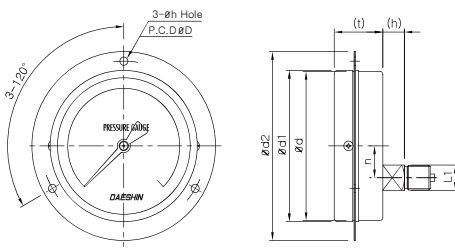
Model. DS-1011



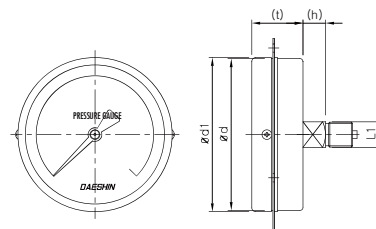
Model. DS-1012



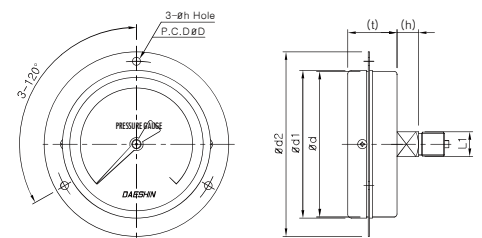
Model. DS-1013



Model. DS-1014



Model. DS-1013C



Model. DS-1014C

### 표준사양

Dimensions (mm)

Dial	Model No.	Ød	Ød1	Ød2	b	n	t	L1	h	Øh	ØD
40	DS-1011	41	42	-	8	-	(24)	12	(30)	-	-
	DS-1013C			-	-	-	(26)		(9)		
50	DS-1011	51.5	53	-	9.5	-	(30)	14	(36)	-	-
	DS-1013C			-	-	-			(10)		
60	DS-1011/1012	62	63	80	10.5	-	(33)	14	(40)	4.5	72
	DS-1013C/1014C			-	-	-			(10)		
75	DS-1011/1012	76	78	100	12	-	(35)	17	(52)	4.5	88
	DS-1013C/1014C			-	-	-			(14)		
100	DS-1011/1012	100	102	128	17	-	(36)	22	(63)	5.5	115
	DS-1013/1014			-	33	-			(15)		
150	DS-1011/1012	152	153	188	17	-	(41)	22	(94)	5.5	174
	DS-1013/1014			-	33	-			(24)		
200	DS-1012	198	200	234	17.5	-	(50)	22	(117)	5.5	220

Pressure Gauge

Accessories

Thermometer

Thermocouple & R.T.D

Thermowell